



PHASE IV

HEADINGLEY, MANITOBA

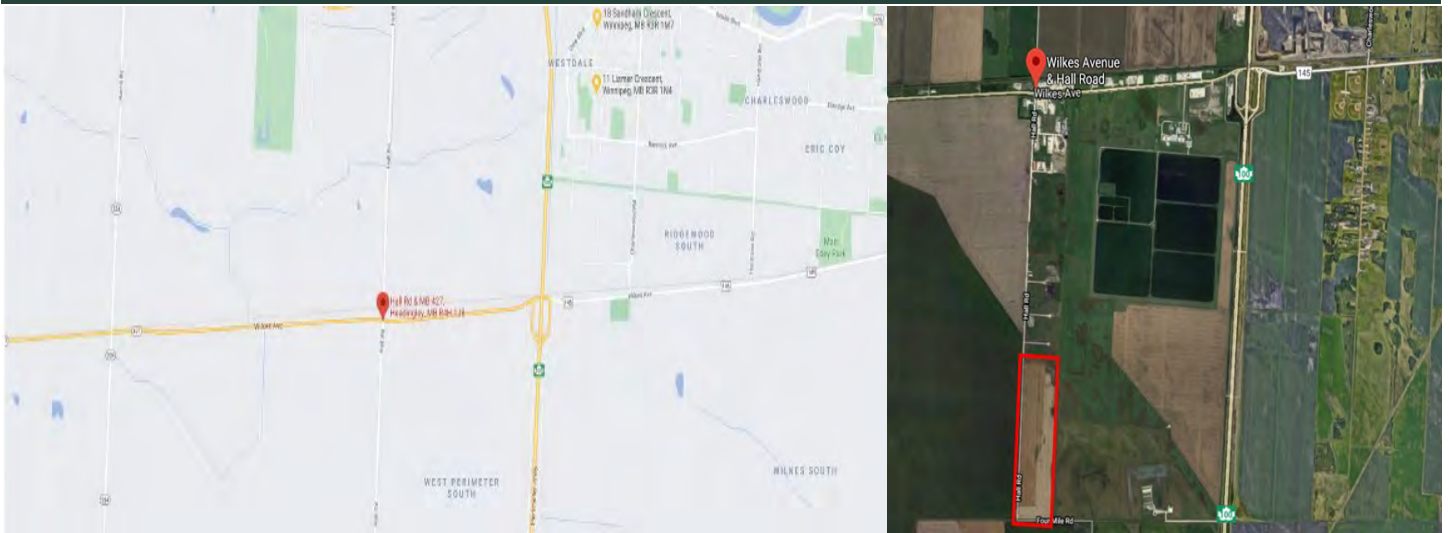
INDUSTRIAL VACANT LAND FOR SALE

PROPERTY FEATURES

- Lot sizes from 1.05 to 2.84 acres (can be combined)
- Hall Road is constructed to permit heavy truck and machinery traffic
- Municipal sewer and water
- 600 V power, MTS, natural gas - Services run to Phase I with connection fees from the RM of Headingley
- No City of Winnipeg business tax
- Low property taxes
- Many businesses have already moved into the area
- 1 mile from perimeter highway
- Easy access to all parts of town
- All sales are subject to the development approval by the RM of Headingley

ASKING PRICE: \$ 250,000.00 PER ACRE PLUS APPLICABLE TAXES

PROPERTY LOCATION - Located on Hall Road just south of Wilkes Avenue in the RM of Headingley



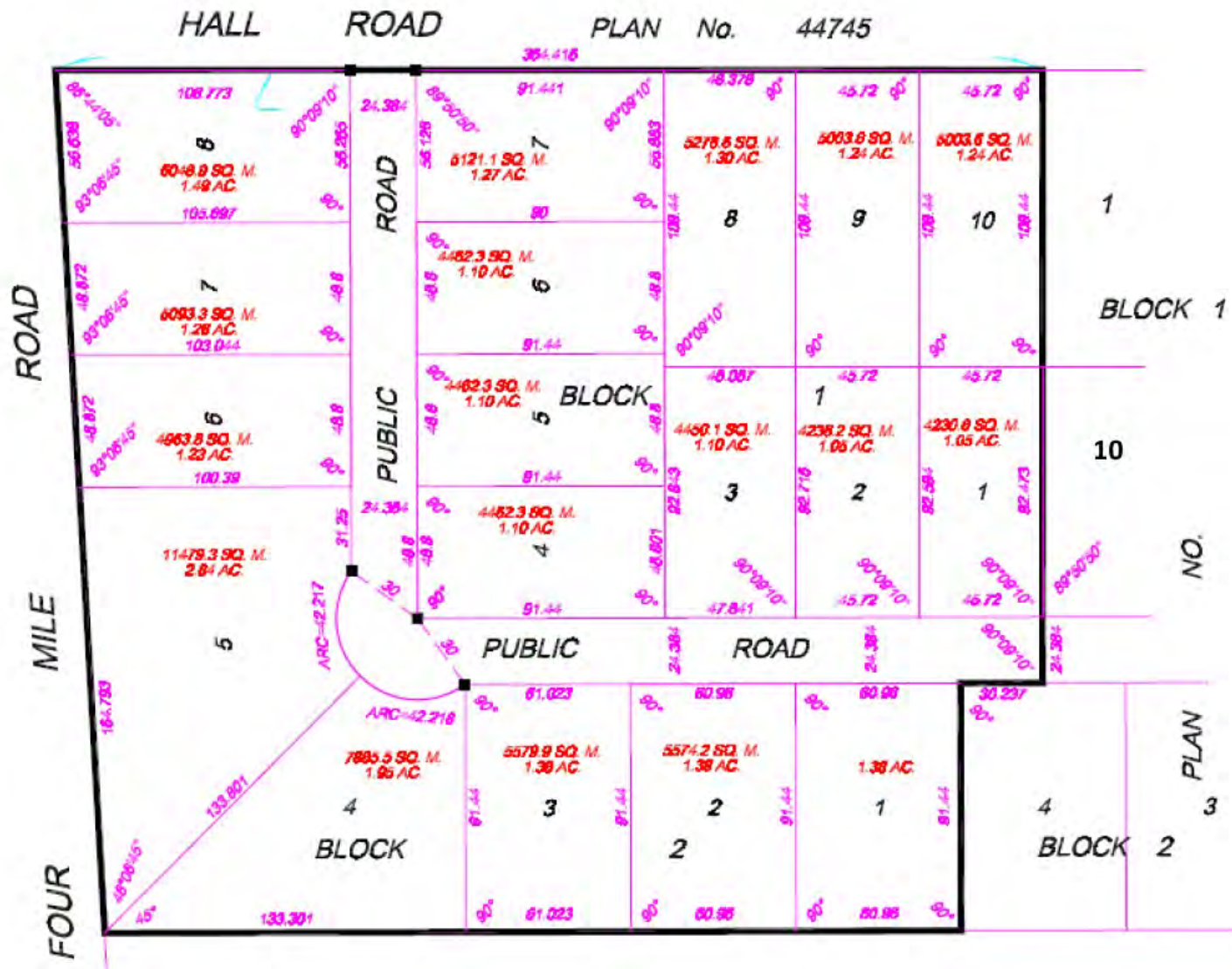
PROPERTY DETAILS

AVAILABLE LOT SIZES: LOTS RANGING FROM 1.05 to 2.84

ZONING: IG - INDUSTRIAL GENERAL

PROPERTY TAXES: TBD

PROPERTY SITE PLAN - LOT AVAILABILITY



MARK THIESSEN

Bentley Mark Thiessen Personal Real Estate Corporation
 (204) 794-5700
 MARK@MARKTHIESSEN.CA

RE/MAX
 PROFESSIONALS

RE/MAX
 COMMERCIAL

PROPERTY IMAGES



RE/MAX Commercial is a division of RE/MAX Professionals. The information contained herein has been approved to RE/MAX Professionals by others. We do not warranty its accuracy. You are advised to independently verify the information prior to submitting an offer. The information contained herein may change from time to time without notice. The property may be withdrawn from the market at any time without notice.